

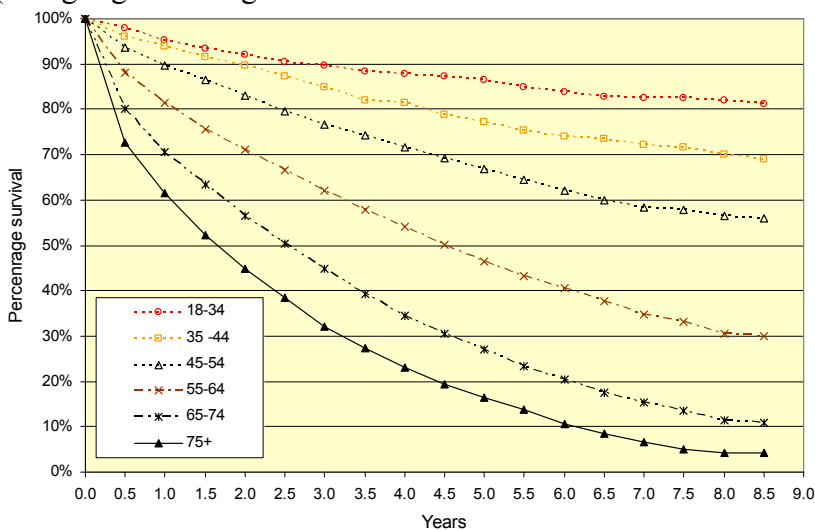
## Addendum 2006 Renal Registry Report

### ***Important update to the 8 year survival of incident patients***

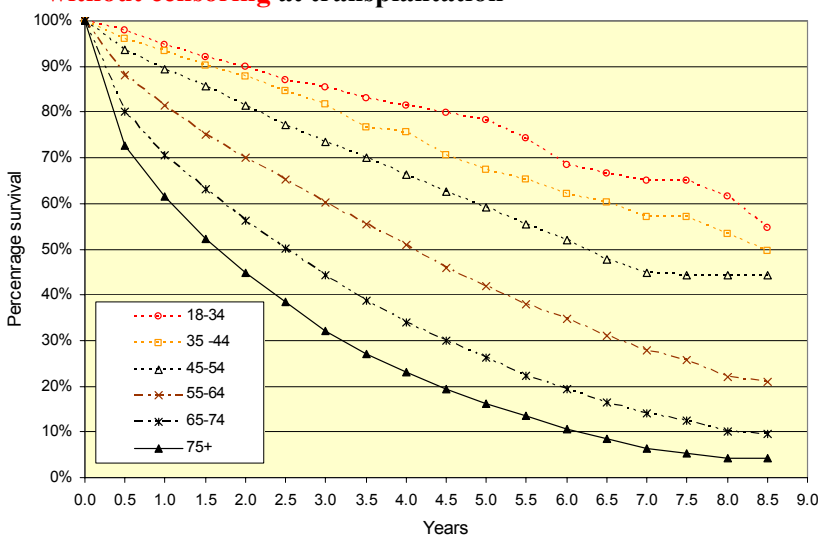
The figure 12.2, showing the 8 year KM survival of incident patients is incorrect with the incorrect figure showing very much **poorer** survival than is the case. An error has been found in the SAS code that calculates these data.

In addition, the KM long term survival curves published in all previous years Reports, although correct, were censored at the time of transplantation. This was not made clear in the analysis and will make the longer term outcomes of younger patients (who are more likely to have undergone transplantation) appear worse as those patients remaining on dialysis patients (who may have more co-morbidity) will have only been included.

The correct figure is shown below without censoring for transplantation and with censoring (to highlight the large differences in outcomes between these two methods)



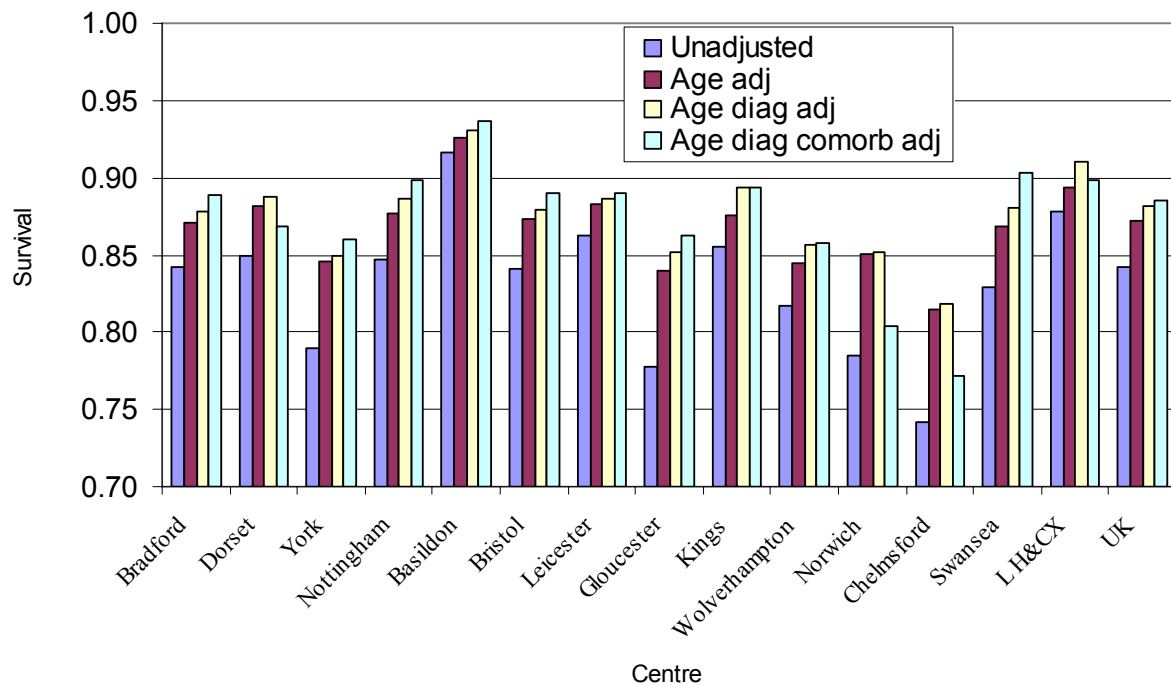
**Figure 12.2a: Kaplan-Meier 8-year survival of incident patients 1997–2004 cohort (from day 0) without censoring at transplantation**



**Figure 12.2b: Kaplan-Meier 8-year survival of incident patients 1997–2004 cohort (from day 0) with censoring at transplantation**

## Adjusting survival for comorbidity

In figure 12.10, two centres with >85% comorbidity data (Bristol and Nottingham) were missing from the original analysis and figure. The new figure including these centres is shown below



**Figure 12.10: Change in 1 year after 90 day survival after adjustment for age, diagnosis and comorbidity**